

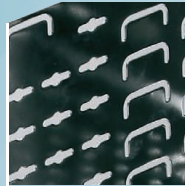
Stainless steel bases

The sterilization tray

Presentation of the standard range +
of stainless steel bases.
Possibility to combine the bases with
our standard lids.

A wide range of dimensions:

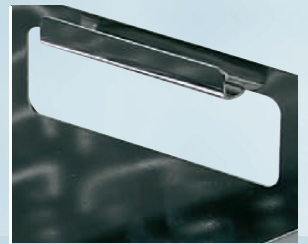
- 337 mm x 222 mm x 53 mm
- 337 mm x 222 mm x 77 mm
- 450 mm x 230 mm x 50 mm
- 533 mm x 244 mm x 44 mm
- 533 mm x 244 mm x 58 mm
- 533 mm x 244 mm x 62 mm
- 533 mm x 244 mm x 82 mm
- 533 mm x 244 mm x 102 mm
- 533 mm x 244 mm x 122 mm
- 533 mm x 244 mm x 142 mm



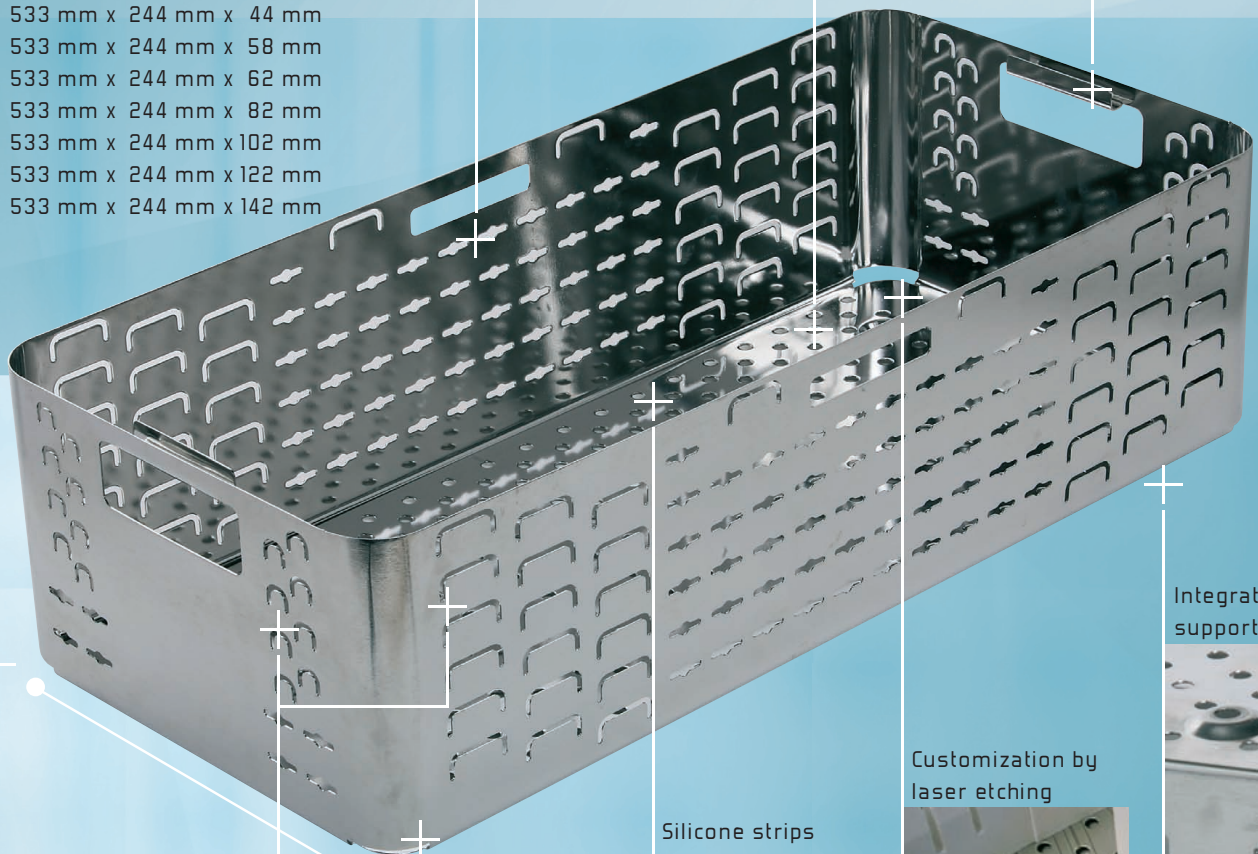
Stainless steel treated by
electrolytic polishing
and passivation



Sterilization hole
Ø 6 mm



Ergonomic handle



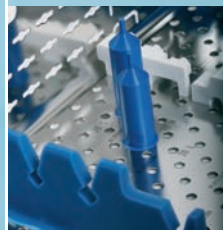
Folding brackets
for insert positioning



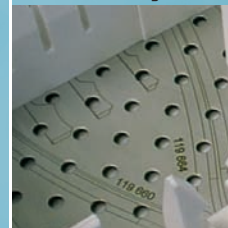
Option:
Silicone made foot
Choice of various
colors



Silicone strips
and machined parts
offer modular
solutions



Customization by
laser etching



Integrated
support



AIP MEDICAL

Sterilization trays to your specifications

Stainless steel bases

DI 3423 H 62



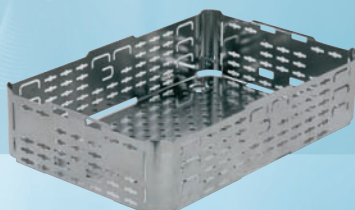
337 mm x 222 mm x 53 mm*
Stacking of 2 bases under one
single cover possible
Folding brackets
for insert positioning

DI 5324



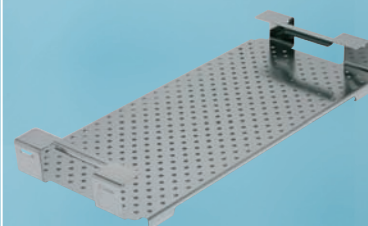
533 mm x 244 mm x 142 mm*
Exist also in:
533 mm x 244 mm x 62 mm*
533 mm x 244 mm x 82 mm*
533 mm x 244 mm x 102 mm*
533 mm x 244 mm x 122 mm*
Folding brackets
for insert positioning

DI 3423 H 86



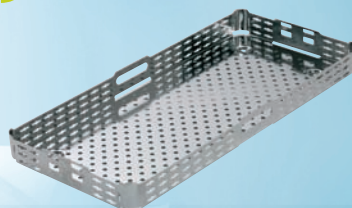
337 mm x 222 mm x 77 mm*
Stacking under the DI3423H62
and one single cover possible
Folding brackets
for insert positioning

ITI 5324



450 mm x 230 mm x 50 mm*
Can be used as insert with any
DI5324 stainless steel base

DIE 5324



533 mm x 244 mm x 44 mm*
Exist also in:
533 mm x 244 mm x 58 mm*
Stacking of 2 bases under one
single cover possible

* Internal dimensions