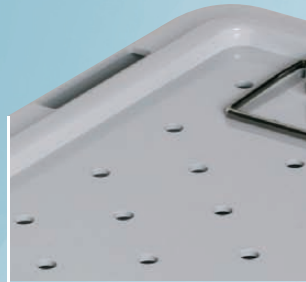


The lids

The sterilization tray

Presentation of the standard range of lids and covers. Possibility to combine the lids with our standard stainless steel or Radel® bases.

A wide range of dimensions:
150 mm x 65 mm x 12 mm
190 mm x 138 mm x 36 mm
230 mm x 175 mm x 12 mm
290 mm x 172 mm x 21 mm
300 mm x 203 mm x 12 mm
350 mm x 235 mm x 24 mm
547 mm x 257 mm x 25 mm



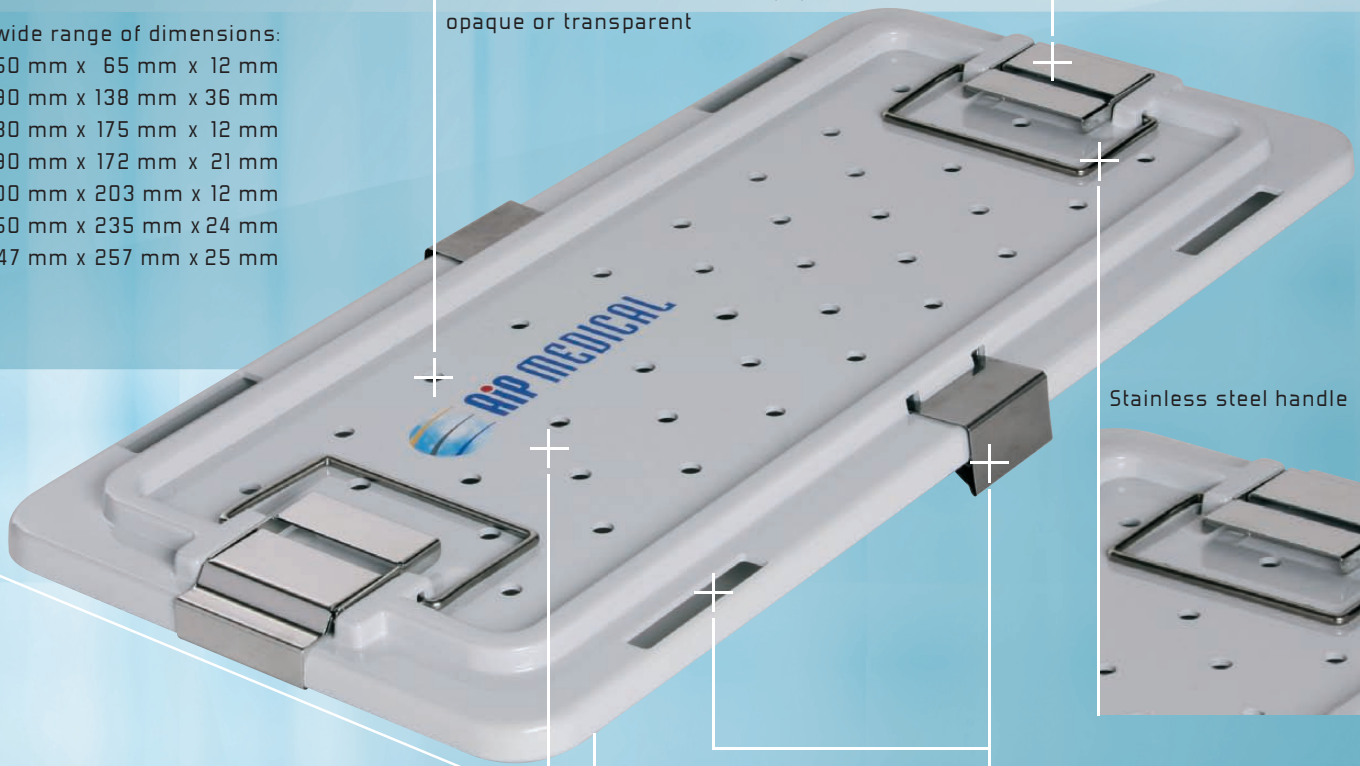
Injected or thermoformed Radel® opaque or transparent



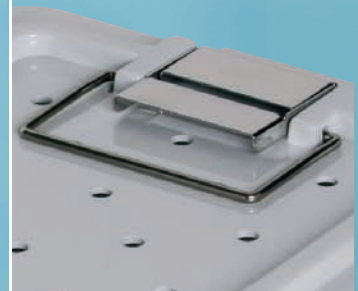
Sterilization hole
Ø 4, 6, 8 mm



Single or double locking system in stainless steel or integrated

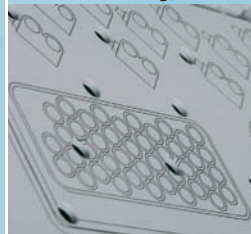


Stainless steel handle



Choice of colors
opaque or transparent
Additional colors available
upon demand

Customization by
laser etching,
silk screening, etc



Options:

- Lateral safety locking system
- Display window



AIP MEDICAL

Sterilization trays to your specifications

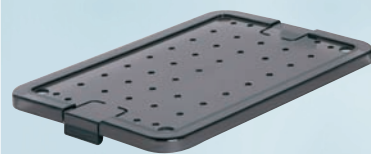
The lids

C 1563



150 mm x 65 mm x 12 mm*
Sterilization holes Ø 4
Integrated locking system
Stacking possible

C 3020



300 mm x 203 mm x 12 mm*
Sterilization holes Ø 6
Integrated locking system
Stacking possible

C 1814



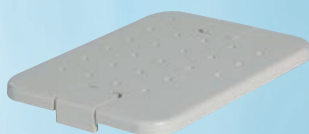
190 mm x 138 mm x 36 mm*
Sterilization holes Ø 4
Integrated locking system
Stacking possible
Flip-cover

C 3423



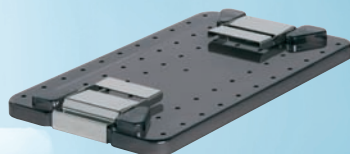
350 mm x 235 mm x 24 mm*
Sterilization holes Ø 8
Stainless steel handles
Single or double locking system
in stainless steel

C 2217



230 mm x 175 mm x 12 mm*
Sterilization holes Ø 6
Integrated locking system

C 2818



290 mm x 172 mm x 21 mm*
Sterilization holes Ø 4
Single or double locking system
in stainless steel
Stacking possible

C 5324



547 mm x 257 mm x 25 mm*
Sterilization holes Ø 8
Stainless steel handles
Single or double locking system
in stainless steel
Lateral locking system possible
Stacking possible
Display windows possible

* External dimensions